

Available online at www.sciencedirect.com

ScienceDirect

journal homepage: www.ejcancer.com

Corrigendum

Corrigendum to ‘Health-related quality of life in patients with advanced well-differentiated pancreatic and extra pancreatic neuroendocrine tumors treated with surufatinib versus placebo: Results from two randomized, double-blind, phase III trials (SANET-p and SANET-ep)’ [European Journal of Cancer 169 (2022) 1–9]

Jiarui Li ^{a,1}, Yuejuan Cheng ^{a,1}, Chunmei Bai ^{a,*}, Jianming Xu ^{b,**},
 Lin Shen ^{c,***}, Jie Li ^c, Zhiwei Zhou ^d, Zhiping Li ^e, Yihebal Chi ^f,
 Xianjun Yu ^g, Enxiao Li ^h, Nong Xu ⁱ, Tianshu Liu ^j, Wenhui Lou ^j,
 Yuxian Bai ^k, Xianglin Yuan ^l, Xiuwen Wang ^m, Ying Yuan ⁿ, Jia Chen ^o,
 Sha Guan ^p, Songhua Fan ^p, Weiguo Su ^p

^a Department of Medical Oncology, Peking Union Medical College Hospital, Chinese Academy of Medical Sciences and Peking Union Medical College, Beijing, China

^b Department of Gastrointestinal Oncology, The Fifth Medical Center, Chinese PLA General Hospital, Beijing, China

^c Department of Gastrointestinal Oncology, Key Laboratory of Carcinogenesis and Translational Research (Ministry of Education), Peking University Cancer Hospital & Institute, Beijing, China

^d Department of Gastric Surgery, State Key Laboratory of Oncology in South China, Collaborative Innovation Center for Cancer Medicine, Sun Yat-sen University Cancer Center, Guangzhou, China

^e Department of Abdominal Oncology, West China Hospital, Sichuan University, Chengdu, China

^f National Cancer Center/Cancer Hospital, Chinese Academy of Medical Sciences and Peking Union Medical College, Beijing, China

^g Department of Pancreatic and Hepatobiliary Surgery, Fudan University Shanghai Cancer Center, Shanghai, China

^h Department of Medical Oncology, The First Affiliated Hospital of Xi'an Jiaotong University, Xi'an, China

ⁱ Department of Medical Oncology, The First Affiliated Hospital of Zhejiang University, Hangzhou, China

^j Department of General Surgery, Zhongshan Hospital of Fudan University, Shanghai, China

^k Department of Gastrointestinal Oncology, Harbin Medical University Cancer Hospital, Harbin, China

^l Department of Oncology, Tongji Hospital, Tongji Medical College, Huazhong University of Science and Technology, Wuhan, China

^m Department of Medical Oncology, Qilu Hospital of Shandong University, Jinan

ⁿ Department of Medical Oncology, The Second Affiliated Hospital, Zhejiang University School of Medicine, Hangzhou, China

^o Department of Oncology, Jiangsu Cancer Hospital, Nanjing, China

^p Department of Clinical and Regulatory Affairs, HUTCHMED, Shanghai, China

DOI of original article: <https://doi.org/10.1016/j.ejca.2022.03.027>.

* Corresponding author.

** Corresponding author.

*** Corresponding author.

E-mail addresses: baichunmei1964@163.com (C. Bai), jmxxu2003@yahoo.com (J. Xu), linshenpk@163.com (L. Shen).

¹ These authors contributed equally to this work.

<https://doi.org/10.1016/j.ejca.2022.10.001>

0959-8049/© 2022 Elsevier Ltd. All rights reserved.

The authors regret there were mistakes in two figures for the wrong direction of functional scales. High scores for functional scales represent high or healthy level of functioning, but the original di-

rection is opposite. These mistakes were found in Figure 2A, Figure 2C, Figure 3A, Figure 3C, and

their figure legends. The outcome results are not affected. The corrected figures and figure legends are given here.

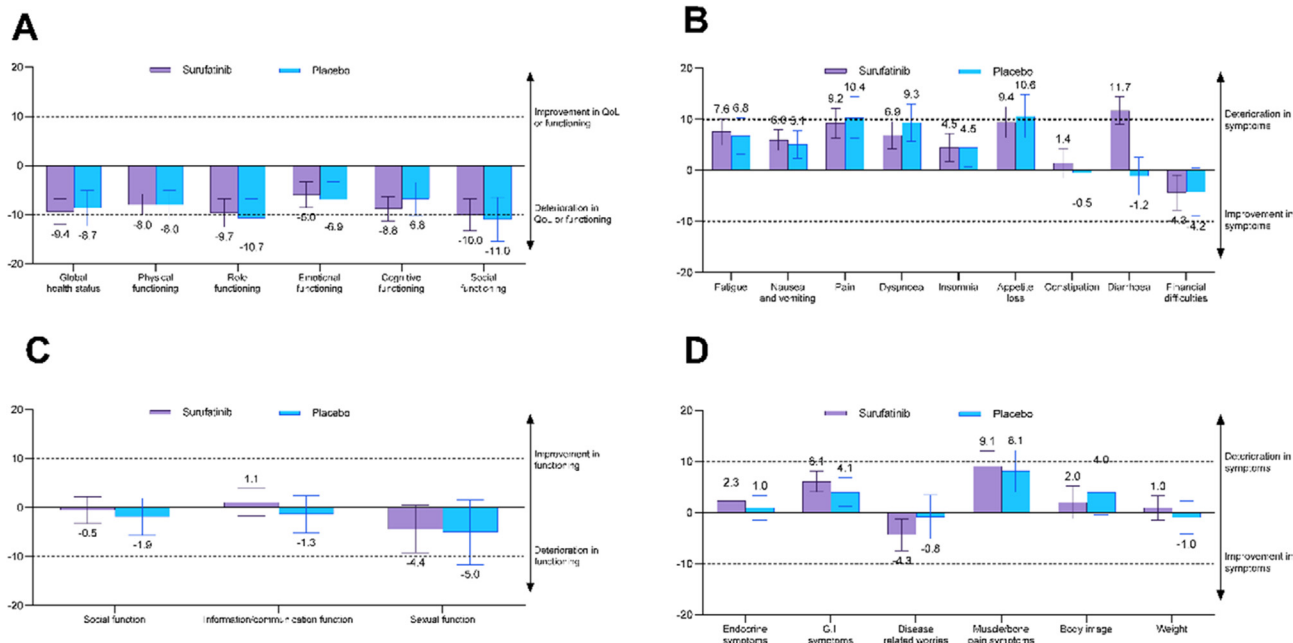


Figure 2 Mean change scores for QLQ-C30 and QLQ-G.I.NET21 scales from baseline to the last available visit. (A) Global health status and functioning scales of QLQ-C30 (B) symptom scales of QLQ-C30 (C) functioning scales of QLQ-G.I.NET21 (D) symptom scales of QLQ-G.I.NET21.

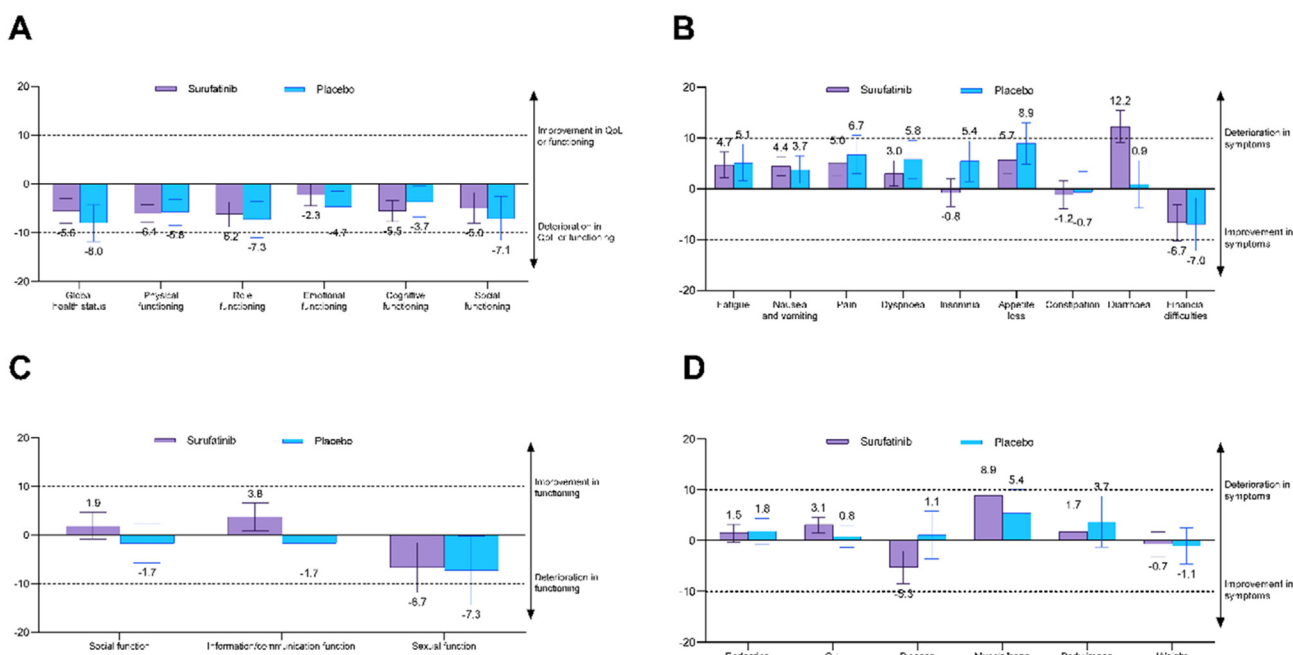


Figure 3 Mean change scores for QLQ-C30 and QLQ-G.I.NET21 scales from baseline to the week 16. (A) Global health status and functioning scales of QLQ-C30 (B) symptom scales of QLQ-C30 (C) functioning scales of QLQ-G.I.NET21 (D) symptom scales of QLQ-G.I.NET21.

rection is opposite. These mistakes were found in Figure 2A, Figure 2C, Figure 3A, Figure 3C, and

The authors would like to apologize for any inconvenience caused.